

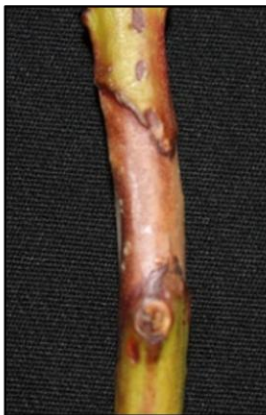
Godronia (Fusicoccum) Stem Canker on highbush blueberry



Field symptoms: Flagging & subsequent dieback of stems



Early symptoms: young canker lesions on one-year-old stems.



Late symptoms: girdling of stem by mature canker lesion, leads to flagging and dieback of stem.

Photos by: Dr. Siva Sabaratnam, B.C. Ministry of Agriculture & Lands.