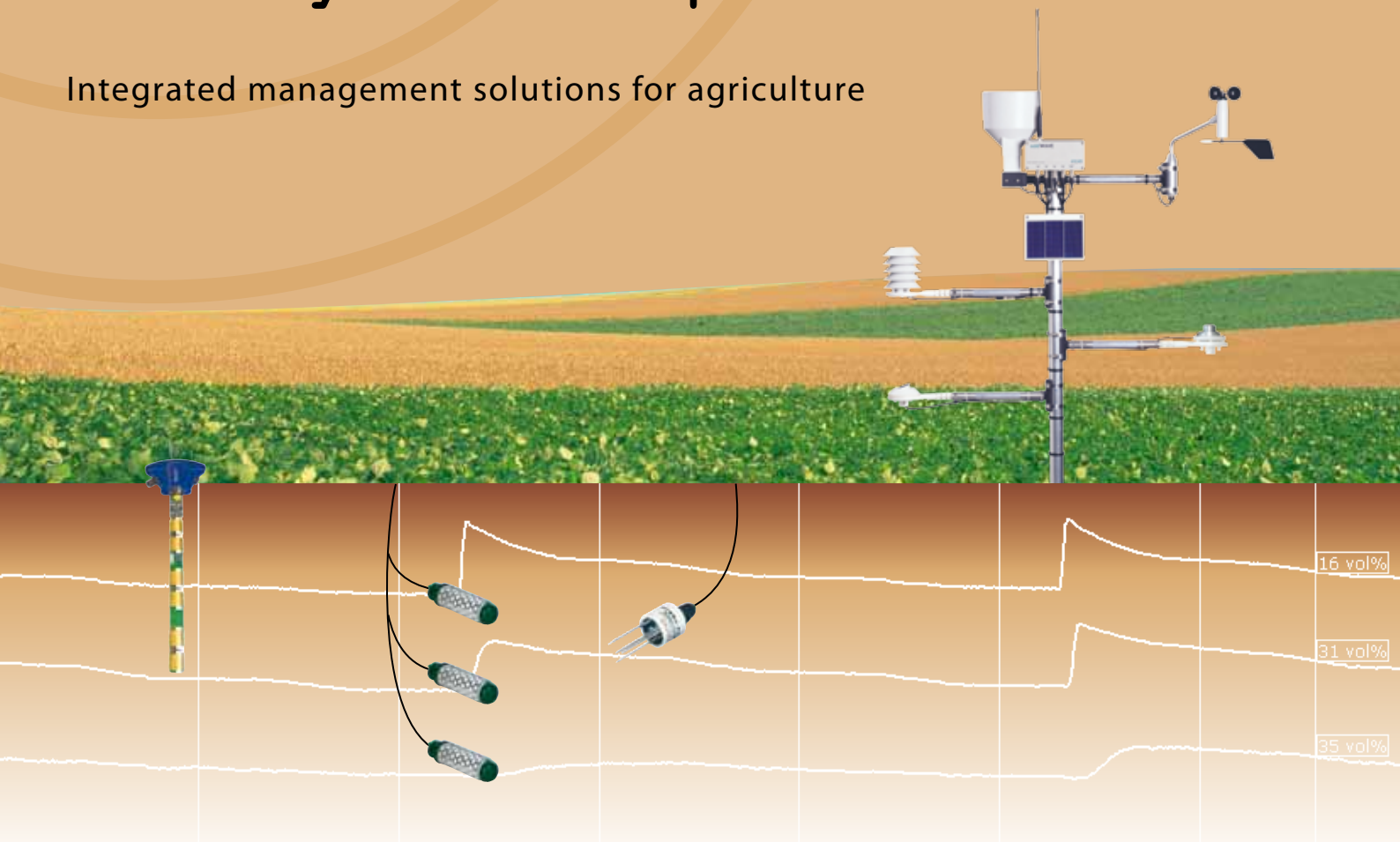
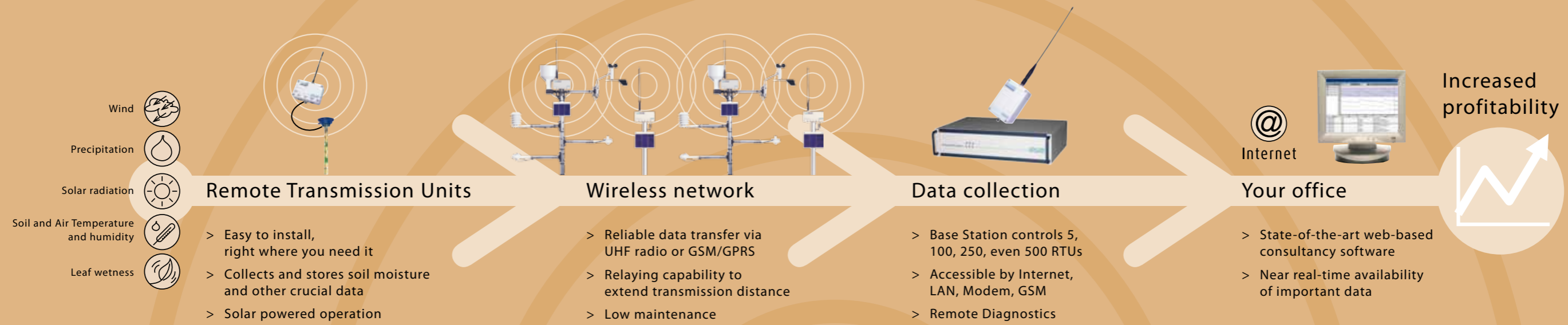


# Wireless communication with your crops!

Integrated management solutions for agriculture



# Optimize your irrigation - and get a grip on crop quality!

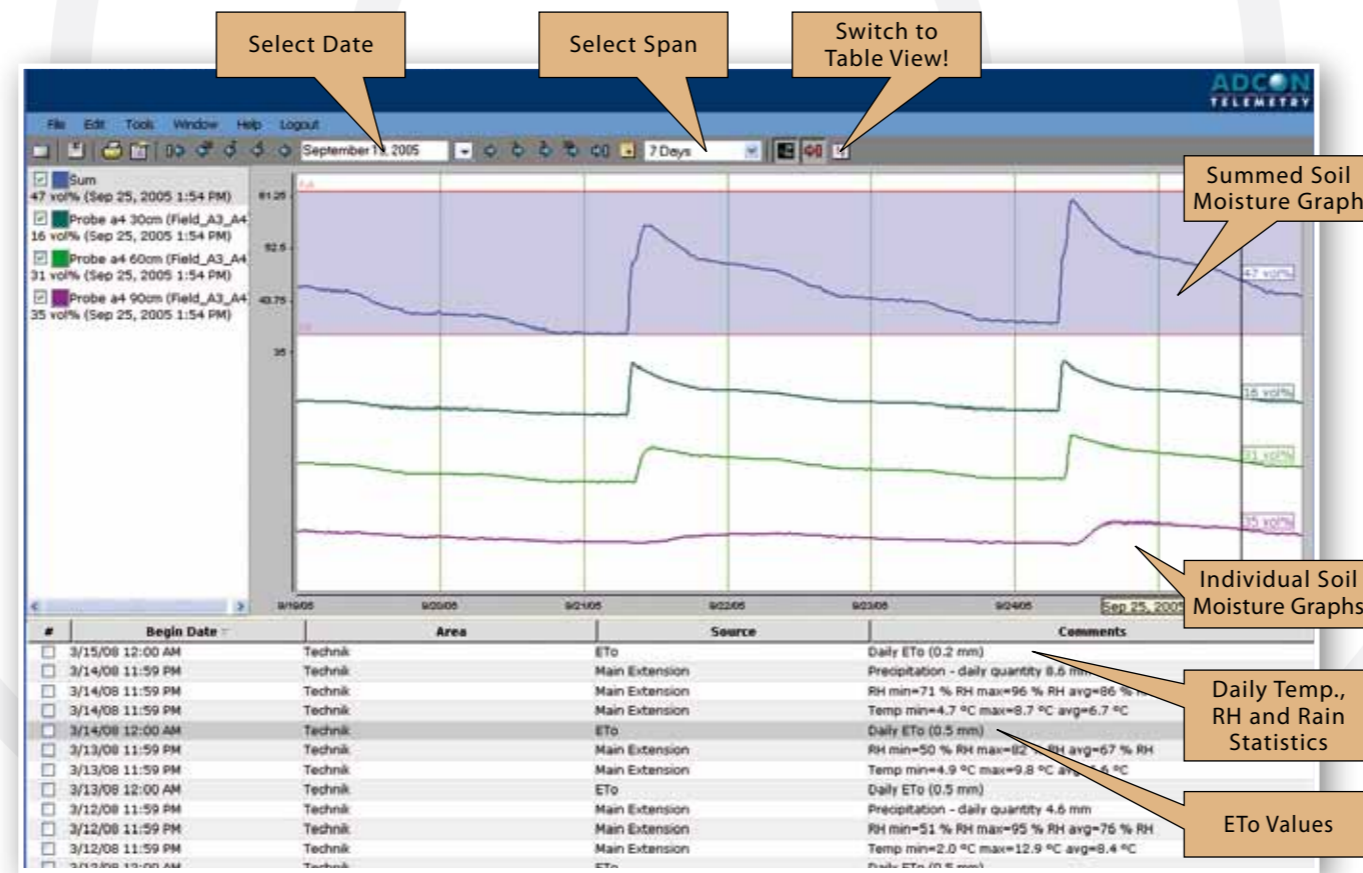


## Growers benefit

- > Get to control your crop quality!
- > Avoid over-watering
- > Avoid wash-out of nutrients
- > Irrigate only when and as much as needed – save water, energy, fertilizer – and improve quality!
- > Adjust irrigation to phenological stages
- > Detect your active root zones
- > Get important soil information anytime, anywhere

## What we provide

- > Site specific soil moisture information in near-real-time
- > Site specific salinity information
- > A large variety of soil sensors for every crop, every soil and every budget
- > Multi-Layer moisture graphs, stacked graphs, agronomical lines (eg. full point)
- > Easily correlate soil moisture with ETo and weather
- > Integrate remote valve control with the A724 addSWITCH
- > Customizable graphs – make them look the way you want!
- > Fully web enabled – work through a web browser, from any computer, from anywhere, at any time!
- > WAP interface for mobile data access



## Your personal irrigation management system

Precision irrigation requires data from all components involved - crop, weather, soil, nutrients, pumps, pressure, filters, reservoirs and more. Adcon enables you to connect all the dots to a concise picture of your operation - and react accordingly, giving your crop what it needs when it needs it.



The right sensor for every crop and soil, the right solution for every grower!

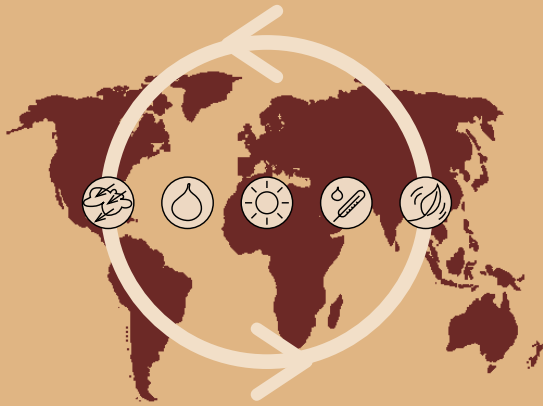
The one and only solution for proper irrigation management does not exist. There are too many different crops and soil types with very different requirements. For that reason Adcon offers a platform that lets you choose the monitoring solution that is best for YOUR crop.

Only Adcon offers soil moisture monitoring, weather observation, ET calculation AND valve control in one platform!

Which sensors does the Adcon platform support?

- > Adcon SM-1 sensors
- > Sentek EasyAGs
- > Sentek EnviroSMARTs
- > Watermarks
- > AquaSpy
- > Decagon Sensors
- > AquaFlex
- > AquaCheck
- > ESI Grow Points
- > Stevens Hydra Probes
- > Delta-T Profile Probes
- > ... and many many more!

# ADCON - Equipment for Professionals



The world's leading brands, from wine makers and vegetable growers to banana farmers, many Universities, Governments, Researchers and Consultants, rely on Adcon soil and weather monitoring equipment to deliver timely and accurate data for their daily decisions. Because your crop is too valuable to put it at risk!

More than 35.000 telemetry units sold make Adcon the leading manufacturer of weather stations. Adcon Telemetry – not the cheapest, but the best equipment to get the job done.

If you want to know more check out our website, contact your nearest dealer – or give us a call!



[www.adcon.com](http://www.adcon.com)

Europe, Africa, Latin America:  
ADCON Telemetry GmbH / HQ  
Industraße 24, A-3400 Klosterneuburg, Austria  
Tel. +43 (2243) 38280-0, Fax +43 (2243) 38280-6  
[info@adcon.at](mailto:info@adcon.at), [www.adcon.com](http://www.adcon.com)

USA, Canada, Mexico:  
ADCON International INC.  
2050 Lyndell Terrace, Suite 120  
Davis, California 95616, USA  
Tel. +1 (530) 753-1458, Fax +1 (530) 753-1054  
[info-usa@adcon.com](mailto:info-usa@adcon.com), [www.adcon.com](http://www.adcon.com)

Australia, Asia:  
ADCON Telemetry Pty. Ltd.  
1/184 Prospect Rd, Prospect, SA 5082, Australia  
Tel. +61 8 8342 5343, Fax +61 8 8342 5363  
[info-aus@adcon.com](mailto:info-aus@adcon.com), [www.adcon.com](http://www.adcon.com)

Local dealer

SMART WIRELESS SOLUTIONS