

Forage Advisor

TerraLink Horticulture Inc.

Early Spring 2017

Pests

Western Corn Rootworm in BC

The Western Corn Rootworm (WCRW), *Diabrotica virgifera* is a major corn pest in the mid-west and eastern North American and is now confirmed as active in the central and eastern Fraser Valley in August 2016. Surveying revealed varying levels of infestation in fields of both silage and sweet corn. It has also be confirmed in a neighboring Dahlia flower crop adjacent to a corn field.

Western Corn Rootworm



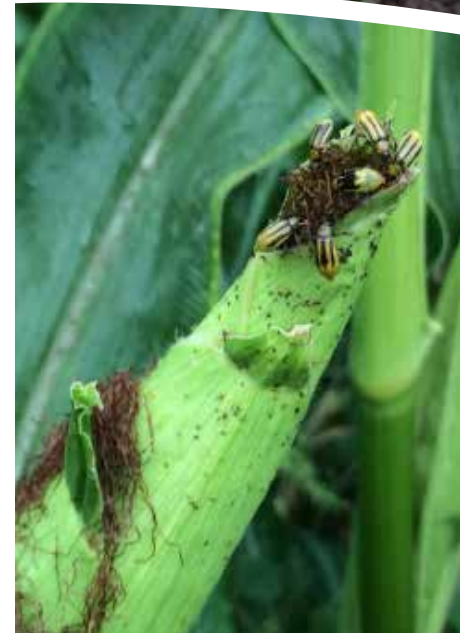
The life cycle is one generation per year with eggs being laid in established corn in the late summer

in soil cracks. The eggs overwinter and hatch in the spring. The larvae feed on the newly planted corn roots for about a month before they pupate. The adults then emerge in July. The adult beetles feed on corn foliage and pollen and mate. They are active fliers so can move easily from plant to plant. The females feed for about two weeks and then lay their eggs in the corn fields and the cycle starts again. Adults live for about a month.



Western Corn Rootworm damage

Damage from the early spring larvae feeding on the corn roots will decrease your plant growth and may cause full or partial lodging of your crop and reduced tonnage. The adult beetles feeding on the silks affect cob fill and contaminate the crop which is especially a concern with sweet corn. Adult beetles feeding



Signs of beetle feeding on cobs: silks are eaten, snapped off, dropped

on flowers such as Dahlias affect their overall marketability.

If you see this pest in your corn or flowers, management may be necessary. Management includes: crop rotation out of corn every 2-4 years, use of seed treatments (Our **Dow TMF 8106RA** Corn seed is treated to help control corn rootworm and other soil pests), or the use of in-furrow sprays at planting, and / or foliar sprays for adults in July – August. Your sales rep can assist with treatment and chemical options for control if you suspect you have this pest in or near your corn fields.

Photos and technical data courtesy of Tracy Hueppelsheuser and Susan Smith of BC Ministry of Agriculture.

Rooted in your community.

TerraLink

Richardson Seed

Forage Seed Mixtures

Richardson Seed forage blends do not contain endophyte-enhanced grasses.

PASTURE MIXES

General Pasture (Coastal/Interior)

For well-drained soils where high quality seed is required but improved varieties are not essential.

Horse & Sheep Pasture (Coastal/Interior)

Specially formulated for the Coastal & Interior areas to give hay or form sod without legumes as required by horses.

Wetland Pasture (Coastal/Interior)

Designed for extremely water-logged soils such as those which are flooded for extended periods of time in the spring.

COASTAL FORAGE MIXTURES

(for Intensive Production)

Orchardgrass Blend (Coastal)

An orchardgrass mixture designed for intensive hay, silage, and grazing situations.

Orchardgrass / Tall Fescue (Coastal)

Orchardgrass / Tall Fescue Mix is designed for

intensive hay, silage, and grazing situations. This blend contains improved orchardgrass, along with two premium tall fescue varieties. The mixture is a medium maturing, highly productive forage blend.

Premium Tall Fescue (Coastal)

A blend of improved varieties well suited to the Coastal area. It is best seeded on fields with good weed control as tall fescue does not compete well during establishment. Provides excellent yields for silage and hay production in a wide range of soil conditions.



Hay Baler (Coastal)

Hay Baler Forage Seed Mixture is a high-performance forage blend designed for high-quality hay production. Included in this mixture is a small percentage of annual ryegrass to act as a nurse crop for initial weed control purposes.

INTERIOR FORAGE MIXTURES

(for Intensive Production)

Southern Interior Dryland

Designed for non-irrigated pasture or hay field applications in the southern regions of the BC Interior.

Southern Interior Irrigated

Suited for both hay and pasture fields under irrigation in the southern regions of the BC Interior.

Northern Interior Dryland

Designed for non-irrigated pasture or hay field applications in the northern regions of the BC Interior.

Northern Interior Irrigated

Suited for both hay and pasture applications under irrigation in the northern regions of the BC Interior.

Premium Alfalfa

This mixture is comprised of two WL Alfalfa varieties. WL Alfalfas are some of the highest quality, highest yielding alfalfas in the marketplace.

Triple Alfalfa

This mixture is comprised of 3 well known improved alfalfa varieties.

Alfalfa Hay Baler

A productive blend of three improved alfalfa varieties along with two orchardgrass cultivars. Suitable for high production hayland and rangeland pasture use.



Spring Seed

Keep your herd thriving with superior forage choices from **Richardson Seed** brand forage grasses, **WL Alfalfas** and **Dow Seeds™** forage corn. Highly palatable feed choices make for a healthy herd.

WL Alfalfas

WL Alfalfas are the choice for beef, dairy and cash hay producers looking for outstanding yield potential and exceptional forage quality. Featuring WL 354HQ and WL 319HQ.

Dow Seeds™

Dow Seeds™ offers one of the industry's most extensive portfolios of innovative solutions for profitable corn production. Featuring F2F343 (CHU 2700), HLSR35 (CHU 2750), TMF 94L37 (CHU 2800).

Let us supply your spring seed needs. For a dealer in your area and information on our full line of **Seed, Fertilizer and Pest Control Products**, visit us online at www.tlhort.com or call us toll free at 1-800-661-4559.

Rooted in your community.

TerraLink

New Products for 2017

Expanded Bale Wrap Products

TerraLink's forage plastics line-up is expanding to offer you more options. Last year we added the genuine Ag-Bags to our plastics. The Ag-Bag plastics allow you to cut your feed costs, not your feed quality. Quality construction allows for more tons per bag, better tear and puncture resistance, UV inhibitors and an airtight environment to prevent spoilage. Designed to store a wide variety of feeds, grains, crop residues and by-products. Feed rations can be blended and balanced. The Ag-Bag puts unlimited, low-cost storage capacity, where you want it and when you need it.

NEW for 2017:



Croptight

Croptight is a 5 layer film designed to replace netwrap in round silage bales. Provides greater air barrier and helps produce a more dense bale by exerting a tighter grip around the haylage as it is baled. Less chance of oxygen being trapped within. Offers additional bale edge protection than netwrap to ensure an overall higher quality silage.

SiloFlex

SiloFlex is a premium 3 layer bale wrap designed to offer superior strength, puncture and tear resistance, and UV protection over mono-layer and other economy brands of bale wrap. SiloFlex is an affordable bale wrap in a premium multiple layer stretch film made of the latest in polymer

SKU	Description	Size
3774100	SILAGE BALE WRAP WHITE 25MU	750M X 1500M
3774200	SILAGE BALE WRAP GREEN 25MU	750M X 1500M
3774220	SILAGE BALE WRAP WHITE SILOFLEX 25MU	750M X 1500M
3774221	SILAGE BALE WRAP WHITE POLY CROP 25MU	750M X 1500M
3774222	SILAGE NET WRAP CROPTITE 16MU	1280M X 2000M
3774223	SILAGE BALE WRAP GREEN POLY CROP-PRO TECHNOLOGY 25MU-PRO	750M X 1950M
3774262	SILAGE PATCH TAPE WHITE	72MM X 33
3774300	SILAGE NET WRAP	48" X 9842'
3777000	AG BAGS:	8 X 150
3777010	Convenient silage storage bags to preserve valuable nutrients and enhance cool fermentation. Ag Bags allow you to store your feed where you need it.	8 X 200
3777020		8 X 250
3777030		8 X 300
3777040		9 X 135
3777050		9 X 150
3777060		9 X 200
3777070		9 X 250
3777080		9 X 300
3777090		10 X 150
3777100		10 X 200
3777110	10 X 250	
3777120	10 X 300	
3777130	10 X 400	
3777140	11 X 250	
3777150	12 X 200	
3777160	12 X 250	
3777170	12 X 300	



technology. SiloFlex is particularly suited for use with round bale wrappers and in-line wrappers, with silage bales, high moisture hay, straw and dry hay. Built-in UV stabilizers protect against the sun's harmful rays. SiloFlex is capable of withstanding temperature extremes to keep the bales safe and secure even in hot summers and cold winters.

The Silotite App featuring a bale calculator is now available for iOS and Android. Download for FREE from the App Store or Google Play! Search: Silotite.

PolyCrop and PolyCrop Pro

Visqueen Polycrop is a high quality 5 layer into one layer, silage stretch film. Offers an enhanced oxygen barrier and excellent puncture resistance making it suitable for tough, stubby crops. Polycrop provides a consistently reliable wrapping experience resulting in the production of securely wrapped, well shaped and better protected bales. Ideal for day and night time wrapping and is UV protected for all climates. Guaranteed protection for 12 months after wrapping. 100% recyclable is a key feature.

Polycrop Pro is also a 5 layer stretchfilm. It is additionally stretched under controlled manufacturing conditions which result in a high performance stretchfilm with additional reel length and a lower film thickness which combine to provide enhanced bale throughput. More bales are wrapped per reel and less film to recycle post use. Less reel change overs saves time and less film by weight is needed to wrap each bale. Has all the key benefits and guarantees of the regular Polycrop.

For available sizes, please check our updated plastics list on the previous page.

Soil Conditioning

Custom Lime Spreading in the Fraser Valley

Because of our high rainfall in the Fraser Valley, native soils become acidic over time. Most crops prefer a higher pH range so the soil must be adjusted with a limestone. The soil pH level affects how well nutrients are taken up by plants. When soil pH is not in an optimum range for nutrient uptake some of the money spent on fertilizer will be wasted. To see this graphically, see Figure #1.

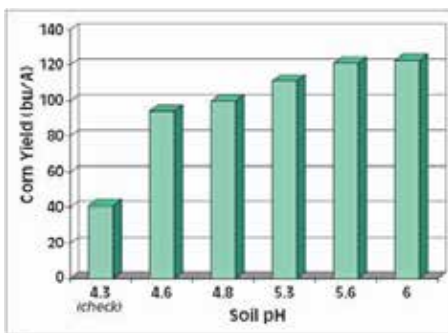


Figure 1. Yield response of corn to soil pH. (From Lathwell and Reid. 1984. In F. Adams, ed. *Soil Acidity and Liming-Agronomy* Monograph 12, 2nd Edition. American Society of Agronomy).



Our TerraGator spreading limestone.

For most crops, an application of 1 – 2 tonnes per acre will bring soil pH into an optimum range between pH 5.5 – 6.5.

Start with a soil test, which can be done quickly and conveniently at TerraLink’s Plant Science Lab at our Abbotsford location. The test results will help pinpoint how much limestone is required.

Note: Minimum order 20 tonnes per location for most Fraser Valley areas.

New to TerraLink

Symbex Soil Biological Stimulator

Symbex is a soil biological stimulator that increases aerobic bacteria (vs. anaerobic) and beneficial fungi, such as *mycorrhizae*. Symbex contains specific food sources, micronutrients and enzymes that stimulate their activity and soil populations. Symbex does not contain live biological organisms or humic acid, nor is it a “compost tea”.

By increasing biological populations and activity, Symbex maximizes nutrient availability to the roots, improving efficiency of ground-applied fertilizers. Enhancing soil nutrient availability can

directly increase both crop quality and yield. With Symbex, the native beneficial soil microbial activity is increased for a temporary time period (generally 3-4 weeks) after application. This activity in the soil results in additional production and release of carbon dioxide and organic acids in the root zone. This in turn results in improved soil tilth, gas exchange and moisture penetration, helping to create the ideal soil environment that can support rapid root growth. Healthy soils will encourage an increase in mycorrhizal fungi. These groups of fungi form important synergistic associations with plant roots, which assists the uptake of nutrients.

In irrigated high value cropping systems such as alfalfa that are typically in arid growing regions, the increased moisture holding capacity is also beneficial to yield potential and or reducing irrigation expenses. Applying Symbex in Spring or during first irrigation is an excellent way to maximize fall or spring applied fertilizer availability. Nutrients such as phosphorus and zinc which are key in early vegetative growth and root development have limited availability in cold, wet spring soils. Symbex can help overcome these conditions and get a better start in the spring.

Suggested application rate is 1L / ha. Available from TerraLink in two sizes: 18.9L pail and 110L drum. Please contact our office for inventory and pricing.